



MTRL-RP WORKING GROUP ACTIVE PARTICIPANTS*

- > Tapash Sustainable Forest Collaborative
- > The Nature Conservancy
- > WA Dept. of Fish and Wildlife
- > WA Dept. of Natural Resources
- > Yakama Nation
- > USDA Forest Service
- > Washington Conservation Science Institute
- > WA Resource Conservation and Development Council
- > National Marine Fisheries Service
- > US Fish and Wildlife Service
- > Mid-Columbia Fisheries Enhancement Group
- > Kittitas Fire Adapted Communities Coalition
- > Washington Prescribed Fire Council

*Many other organizations have contributed input on specific projects.

In 2013, the [Tapash Sustainable Forest Collaborative](#) launched the 78,650 acre Manastash-Taneum Resilient Landscape Restoration Project (MTRL-RP) as a flagship effort to demonstrate cross-ownership, integrated terrestrial and aquatic landscape scale restoration that benefits people and nature.

The accomplishments achieved through this collaborative effort demonstrate that the goals, objectives, and management strategies used in the MTRL-RP are realistic, and this project is now being used as a role model for the [20-Year Forest Health Strategic Plan for Eastern Washington](#). The project has been nationally recognized and was honored with the “Leadership in Conservation Award” at the Sustainable Forestry Initiative 2016 Annual Conference.

In addition to the measurable indicators of success summarized in this update, project milestones include publication and implementation of: [Landscape Evaluations and Prescriptions](#) (Haugo *et al.* 2016), [Landscape Evaluation Field Reconnaissance](#) (Mize *et al.* 2017),

[Supplemental Aquatic and Riparian Assessment](#) (Gaines *et al.* 2017). Used [Human Ecology Mapping](#) to better understand recreation and other location-specific activities people care about, interagency team development of effectiveness monitoring protocols, which were included as a chapter in the [Draft Environmental Analysis for Taneum Restoration Project](#) that was accomplished by contract for USFS lands (2019).

Restoration goals in the 2016 Landscape Evaluation are actively being realized across all ownerships. Of the 17,600 acres target of forest treatments in the 2016 landscape evaluation, 7,495 acres have been completed to date ([Churchill 2019](#)), so as one measure, we’ve come a long way but have more work ahead!

[learn more >](#)

Manastash-Taneum Watershed

FACTS & FIGURES

27,400
ACRES

analyzed for Draft Environmental Assessment (USFS Taneum Restoration Project)

7.4
MILES

road treatments (e.g. culvert replacement, repair, abandonment, resurfacing)

22,600
ACRES

ownership transferred to consolidate lands for more efficient management

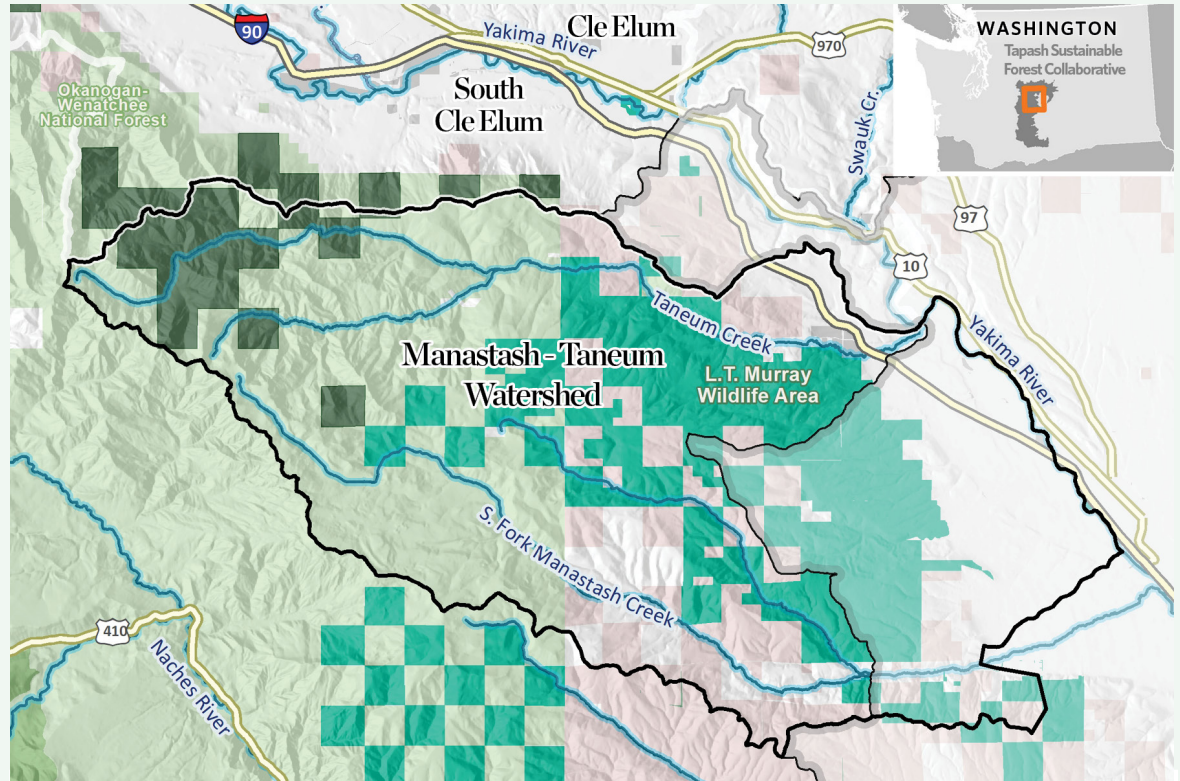
78,650
ACRES

evaluated in a Human Ecology Mapping survey to understand human use and values in the MTRL-RP local area to inform project decisions.

16

PARTNER AGENCIES AND ORGANIZATIONS

participated in [Cascadia Prescribed Fire Training Exchange](#), hosted in Project Area. Completed 3-day field workshop on [Ecological Timber Marking](#).



MAP LEGEND



Manastash and Taneum Watersheds



Tapash Sustainable Forest Collaborative Boundary

Land Ownership

Managed by The Nature Conservancy



National Wilderness



National Forest



Washington Dept. of Fish & Wildlife



Washington Dept. of Natural Resources

1

COALITION ESTABLISHED

Kittitas Fire Adapted Community Coalition

1,729

ACRES

non-commercial restoration thinning treatments

5

STREAM MILES

floodplain restored by in-stream wood placement

557

ACRES

prescribed burns

133,000

TREES PLANTED

3,012

ACRES

commercial & restoration thinning

TAPASH FOUNDERS



Okanogan-Wenatchee National Forest ■ Washington State Dept. of Natural Resources ■ Confederated Tribes & Bands of the Yakama Nation ■ Washington Dept. of Fish & Wildlife ■ The Nature Conservancy

IF YOU WOULD LIKE TO STAY INFORMED
or get more involved please contact:

REESE LOLLEY

rlolley@tnc.org | 509 248.6697

The Nature Conservancy

TESSA VERMUEL

tessa@washingtongrd.org | 509 540.0763

WA Resource Conservation & Development

Photo Credits: Front left: Upper Taneum and Mt. Rainer. Reese Lolley, TNC. Front top right: Wild plum sorts timber sale, log deck. Joe Smith, WA DNR. Front bottom right: Kittitas lands policy committee standing outside with map. Reese Lolley.