



PUBLIC BENEFITS OF CONSOLIDATION

INCREASED connectivity for wildlife migration

BETTER linkage of roads and recreational trails

QUICKER response to wildfires and other cross-boundary emergencies

IMPROVED enhancement of habitat for salmon and other migratory fish

MORE COST EFFECTIVE timber sales and invasive species prevention

CONSISTENT management of river corridors and cross-boundary wetlands

FORMATION OF TAPASH

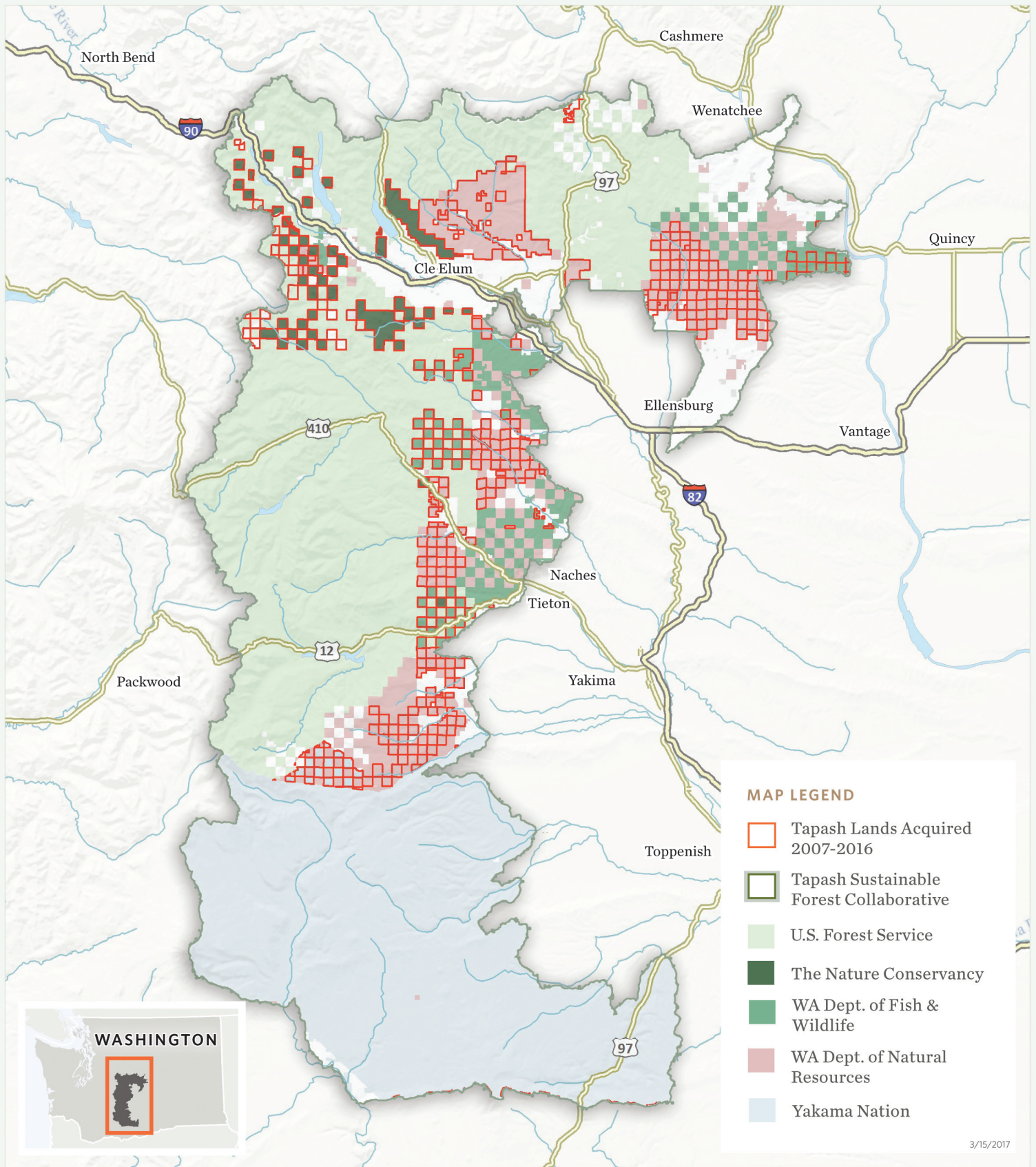
In the Central Washington Cascades, five major land owners signed an MOU in 2007 to form the Tapash Sustainable Forest Collaborative (<http://www.tapash.org/>). The Tapash Collaborative partners coordinate, fund, and implement active restoration projects to maintain resilient working forest lands. Tapash has proven that by working together we achieve more significant and durable outcomes than by working individually.

CHECKERBOARD OWNERSHIP

Between 1850 and 1870, millions of acres of forest were ceded to railroad companies in alternate square mile sections to promote development of the west. Checkerboard ownership hampers effective management of natural resources. Tapash partners engage in cooperative dialogue to promote land consolidation because we recognize that forestland is managed better when it is owned in contiguous tracts.

RECENT ACCOMPLISHMENTS 2007-2016

Through a combination of strategic land exchanges, purchases, and transfers, Tapash partners have accomplished the consolidation of over **246,179 acres** of land since formation of the Collaborative in 2007! This impressive achievement, as displayed in the map, has transformed the landscape and moves us forward to our goal of improved public access, cost-effective timber sales, quicker emergency response, and effective resource management across multiple ownerships.



TAPASH PARTNERS



Okanogan-Wenatchee National Forest | Washington State Dept. Of Natural Resources
 Confederated Tribes & Bands of the Yakama Nation | Washington Dept. of Fish & Wildlife | The Nature Conservancy

JAMES SCHROEDER
 jschroeder@TNC.org | 206 343.4345 x362
 The Nature Conservancy

LAURA POTASH
 laura.potash@TNC.org | 206 678.7866
 Tapash Sustainable Forest Collaborative