



## BACKGROUND

Within the eastern Cascades, the challenges currently facing our forested ecosystems from past management and future climate change have prompted a wide scale shift in land management to focus on ecological restoration. Solutions to these issues are at a scale that transcends ownership boundaries. In the fall of 2014, the Tapash Collaborative launched the **Manastash-Taneum Resilient Landscape Restoration Project (MTRL-RP)** as a flagship effort to demonstrate cross-ownership, integrated terrestrial and aquatic landscape scale ecosystem restoration that benefit people and nature.

Photo: Tapash workshop using tree spacing [method developed by Churchill et al.](#)



## PROJECT OBJECTIVES

In 2016, Haugo *et al.* completed the [MTRL-RP Landscape Evaluations and Prescriptions](#) to set collaborative restoration goals. The objective is to “restore the resiliency of forest and aquatic ecosystems in order to continue providing critical fish and wildlife habitat and ecosystem services while reducing the risk of catastrophic fire to local communities in the face of a warming climate.” The best available science is used to balance ecological objectives with economic viability, produce commercial timber products where possible, and maintain sustainable recreational opportunities.

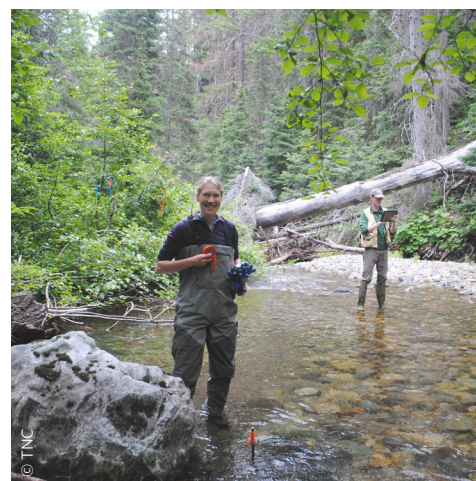
Photo: Recreation is a high priority in the MTRL-RP



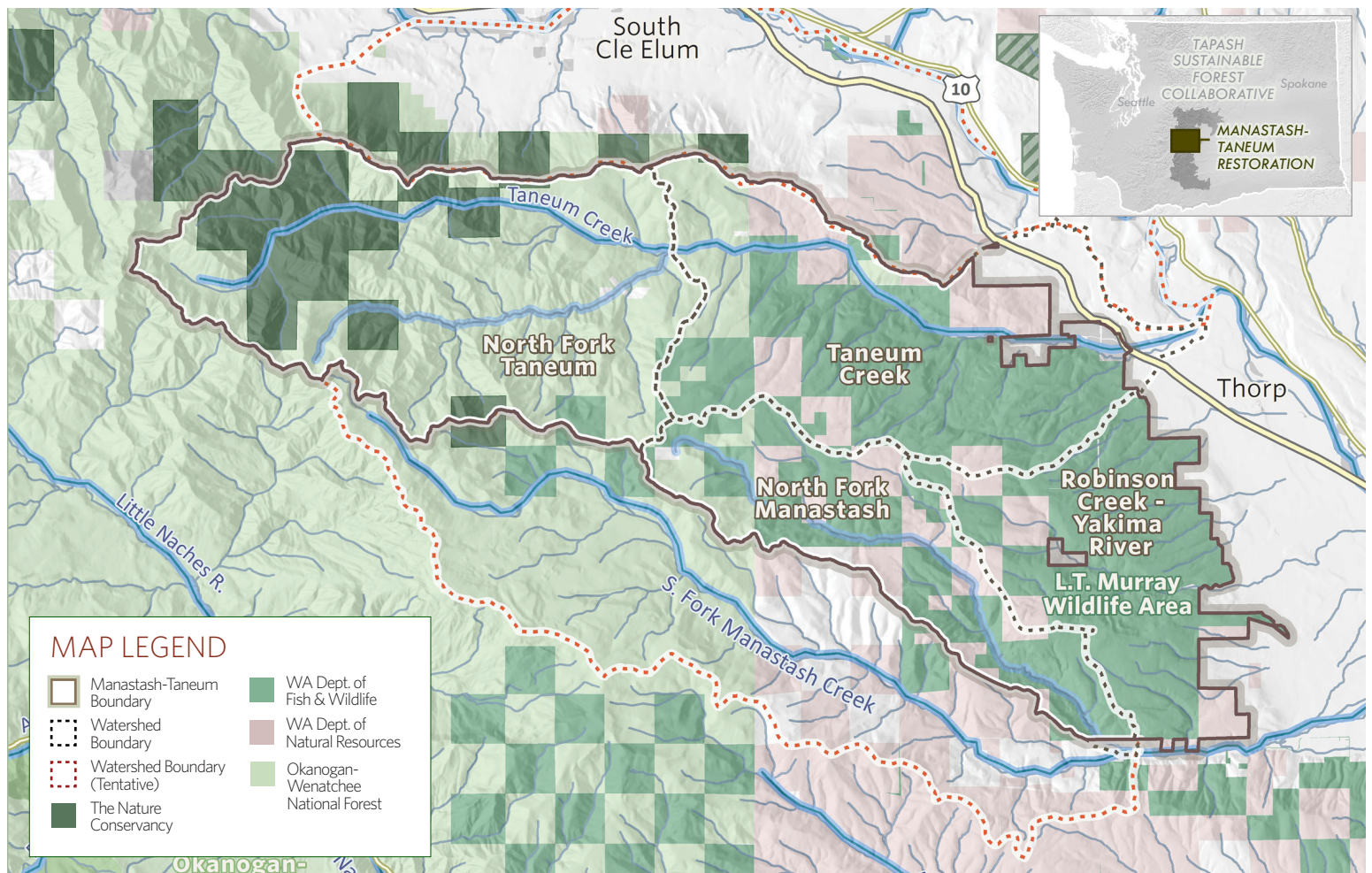
## PARTNERSHIPS, FUNDING & COMMUNITY SUPPORT

The 78,650 acre project includes lands managed by the State Dept. of Fish and Wildlife, State Dept. of Natural Resources, The Nature Conservancy, USDA Forest Service, and ceded lands of the Yakama Nation. These five land managers comprise the Tapash Sustainable Forest Collaborative ([tapash.org](http://tapash.org)). Key partners in 2016 included: University of Washington, WA Conservation and Science Institute, Stewardship Forestry and Science consultants, the WA Wildlife and Recreation Program, Mid-Columbia Fisheries Enhancement Group, Salmon Recovery Funding Board, and Bonneville Power Administration.

Photo: Monitoring stream temperatures for riparian restoration projects







## PROJECT STATUS AND RECENT ACCOMPLISHMENTS

[WashingtonNature.org](http://WashingtonNature.org)

[Tapash.org](http://Tapash.org)

In fiscal year 2016, an array of treatments were completed by the Tapash Collaborative and partners in order to improve forest health and aquatic conditions, including:

- **5 acres floodplain improvement** for Taneum Creek Road 3300 realignment (USFS)
- **Fish passage improvements** including removal of fish blockages, fence removal, flood debris repositioning (DNR, Yakama and WDFW)
- **0.75 miles in-stream wood replenishment** completed (WDFW lands)
- **73,000 trees planted** on 550 post-burn acres (TNC)
- **15 acres non-commercial thinning** in uplands adjacent to streams (Yakama Nation/WDFW)
- **573 acres commercial timber harvest** (DNR)
- **1,243 acres of Commercial Harvest** Pre-Sale Layout (WDFW)
- **6 miles shaded fuel break**, contract awarded for work in 2017 (DNR)
- **17 acres of land purchased** along Taneum Creek floodplain (WDFW)
- **181 acres layout** for 2017 pre-commercial thin (WDFW)
- **Funding Awarded** by Washington Wildlife and Recreation Program for 950 acres of forest thinning, and helicopter placement of large wood for floodplain restoration, North Fork Manastash Creek (WDFW/TNC/Yakama Nation)
- **Adjacent greater Cle Elum Fire Adapted Communities kickoff meeting** of 8 local organizations to discuss workplan for reducing community wildland fire risk

## TAPASH PARTNERS:



Washington  
Department of  
**FISH and  
WILDLIFE**

The Nature  
Conservancy

Okanogan-Wenatchee National Forest ■ Washington State Dept. of Natural Resources ■ Confederated Tribes & Bands of the Yakama Nation ■ Washington Dept. of Fish & Wildlife ■ The Nature Conservancy

Reese Lolley | The Nature Conservancy | [rlolley@TNC.org](mailto:rlolley@TNC.org) | (509) 248-6697

Laura Potash | Tapash Sustainable Forest Collaborative Coordinator | [Laura.Potash@TNC.org](mailto:Laura.Potash@TNC.org) | (206) 678-7866