



TAPASH

Sustainable Forest
Collaborative

R6 CFLR Regional Network Workshop
April 1-2, 2015

Mary Sutton Carruthers, Tapash Coordinator &
Stuart Woolley, USFS Resource/Planning Staff Officer



The Stuart Range overlooking the forest of the Central Cascade Mountains @John Marshall

The Tapash landscape



Federal: Okanogan-Wenatchee NF

State: WDFW, WDNR

Tribal: Yakama Nation

Private: TNC, others



Collaborative Formation

- **2003:** TNC and Rocky Mountain Elk Foundation **work together** to purchase over 10,000 acres in Tieton Canyon
- **2006:** TNC collaborates with WDFW to transfer all but 640 acres to WDFW **Oak Creek Wildlife Area.**
- **2007:** Tieton Conservation Action Plan (CAP) sessions leads to **memorandum of understanding** that facilitates land managers to work together across ownership boundaries
- **2007-2008:** The Tieton Collaborative expands its scope and is renamed the **Tapash Sustainable Forest Collaborative**
- **2010:** Tapash **Collaborative Forest Landscape Restoration** (CFLR) program funding awarded

Executive Leadership



The Nature Conservancy



Collaborative Partnerships

- Recreation Groups
- Wildlife and Conservation Groups
- Salmon Recovery Boards
- Conservation Districts
- Land Trusts
- Private Industry
- WA Prescribed Fire Council
- NOAA
- Many others



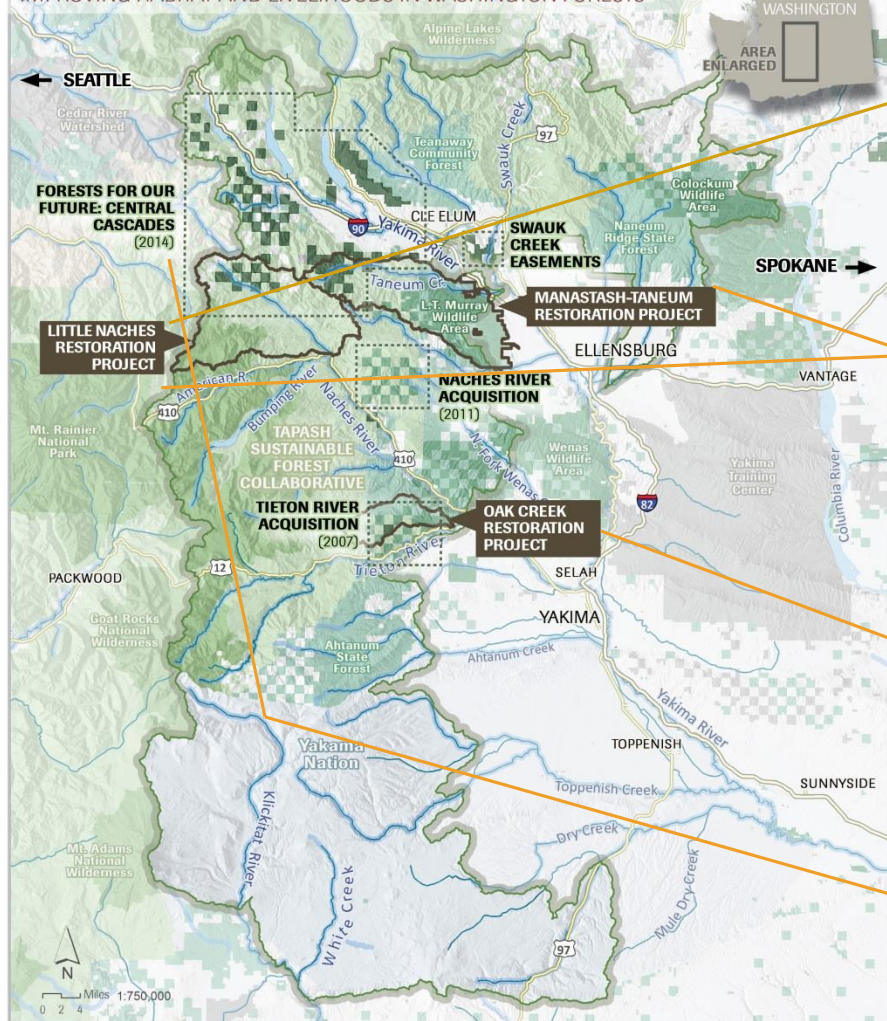
Tapash Landscape

Building Capacity Through Collaboration

TAPASH FOREST COLLABORATIVE

The Nature Conservancy 

IMPROVING HABITAT AND LIVELIHOODS IN WASHINGTON FORESTS



MAP LEGEND

 The Nature Conservancy Property or Easement	 Restoration Project	 National Wilderness	 WA Dept. of Natural Resources	 Other Public Lands
 Tapash Sustainable Forest Collaborative Boundary	 Tribal Land	 National Forest	 WA Dept. of Fish & Wildlife	 Other Private Lands

March 30, 2015

YBFWRB adding **planning capacity** through hydrologic assessment



YAKIMA BASIN
FISH & WILDLIFE
RECOVERY BOARD

The Nature Conservancy 

TNC and CNW **supporting Landscape Evaluation** and Photo Interpretation in Manastash-Taneum and Little Naches landscapes



Conservation
Northwest
Keeping the Northwest Wild

WA Rx Fire Council working with WDFW to **plan for a successful Rx burn** across state and federal lands in Oak Creek



Tapash Collaborative increasing pace and scale of restoration through **strategic land acquisition and exchanges** on historically checkerboarded landscape

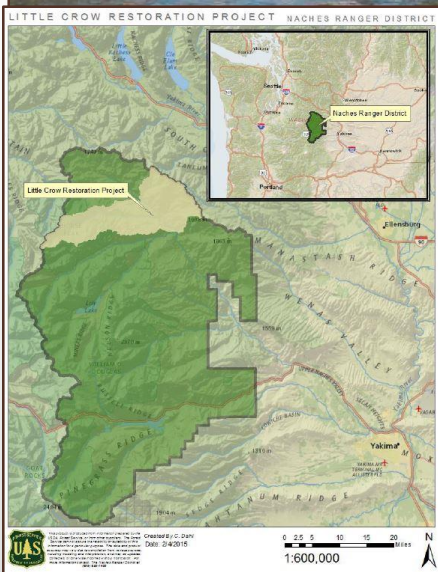


TAPASH

Sustainable Forest
Collaborative

Tapash Projects

Little Naches



Working Group
collaborating with
FS on Little Crow
Project

Oak Creek



Forest and
Aquatic health

Mechanical
and non-
commercial
thinning
completed

Commercial
sale this
summer

Prescribed
burning
across state
and federal
lands

Tapash Projects

Restoration Needs Study and Timber Supply Assessment

Manastash-Taneum

44

R. Haugo et al. / Forest Ecology and Management 335 (2015) 37–50

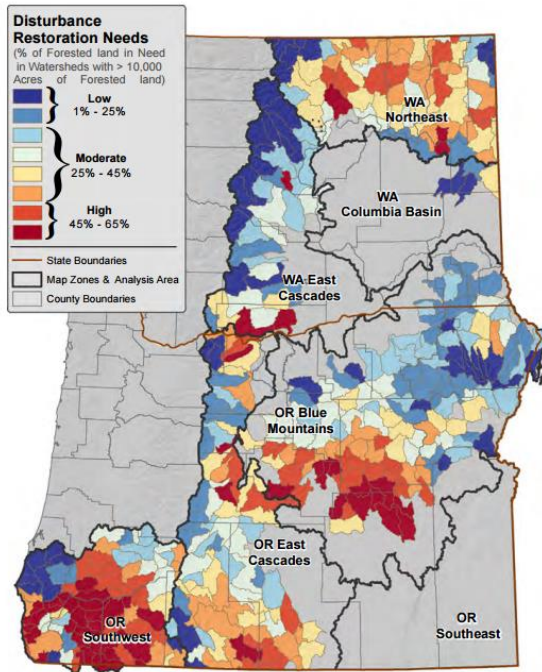


Fig. 4. All disturbance restoration needs as a percentage of forests within 10-digit/5th level hydrologic unit watersheds. Includes the thin/low fire, opening/high fire, overstory thin, thin/low fire + growth, and other disturbance + growth transitions. Within Map Zone labels WA = Washington and OR = Oregon. See Appendix B.4 for restoration need summaries per watershed.



- 90,000 acre landscape that includes WDFW, DNR, USFS, and TNC lands
- Focus on forest and aquatic health, fire, roads
- Landscape evaluation being completed early 2015

Addressing the need for increased restoration: Using Stewardship Authorities effectively



Tribal Forest Protection Act Workshop

- Intertribal Timber Council and USFS
- March 31 - April 2, 2015 Spokane, WA

Stewardship Agreement & Contracts Workshop

- Okanogan-Wenatchee & Colville NF, and partners
- April 15, 2015 Cashmere, WA