

Communities and Fire Restoration

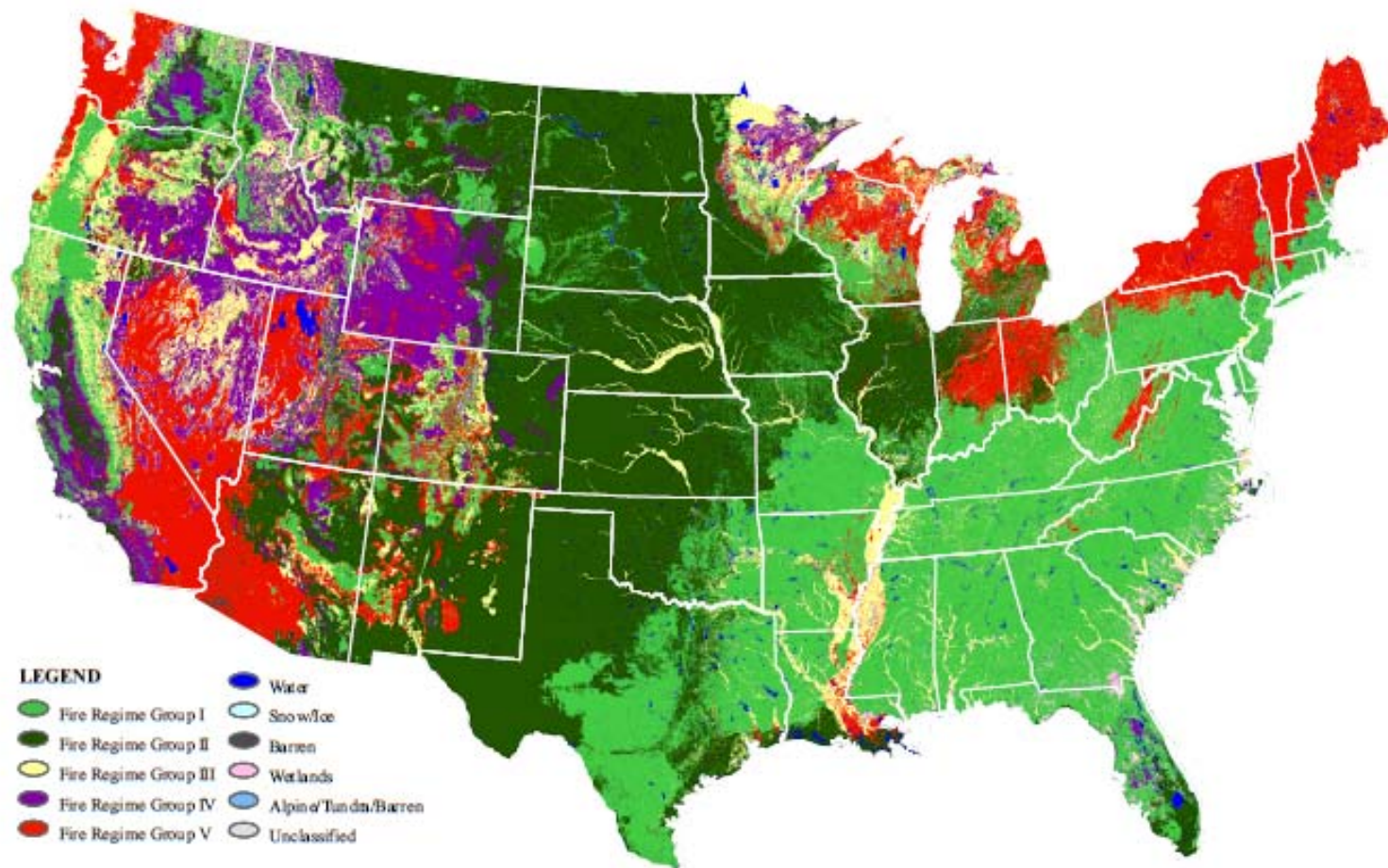


The Role of Communities in Restoring Fire as a Natural Process

Overview

1. Frequent fire regimes dominate approximately 65% of the lower 48 states, although regional variations exist.

Fire Regimes (Landfire Rapid Assessment 2006)

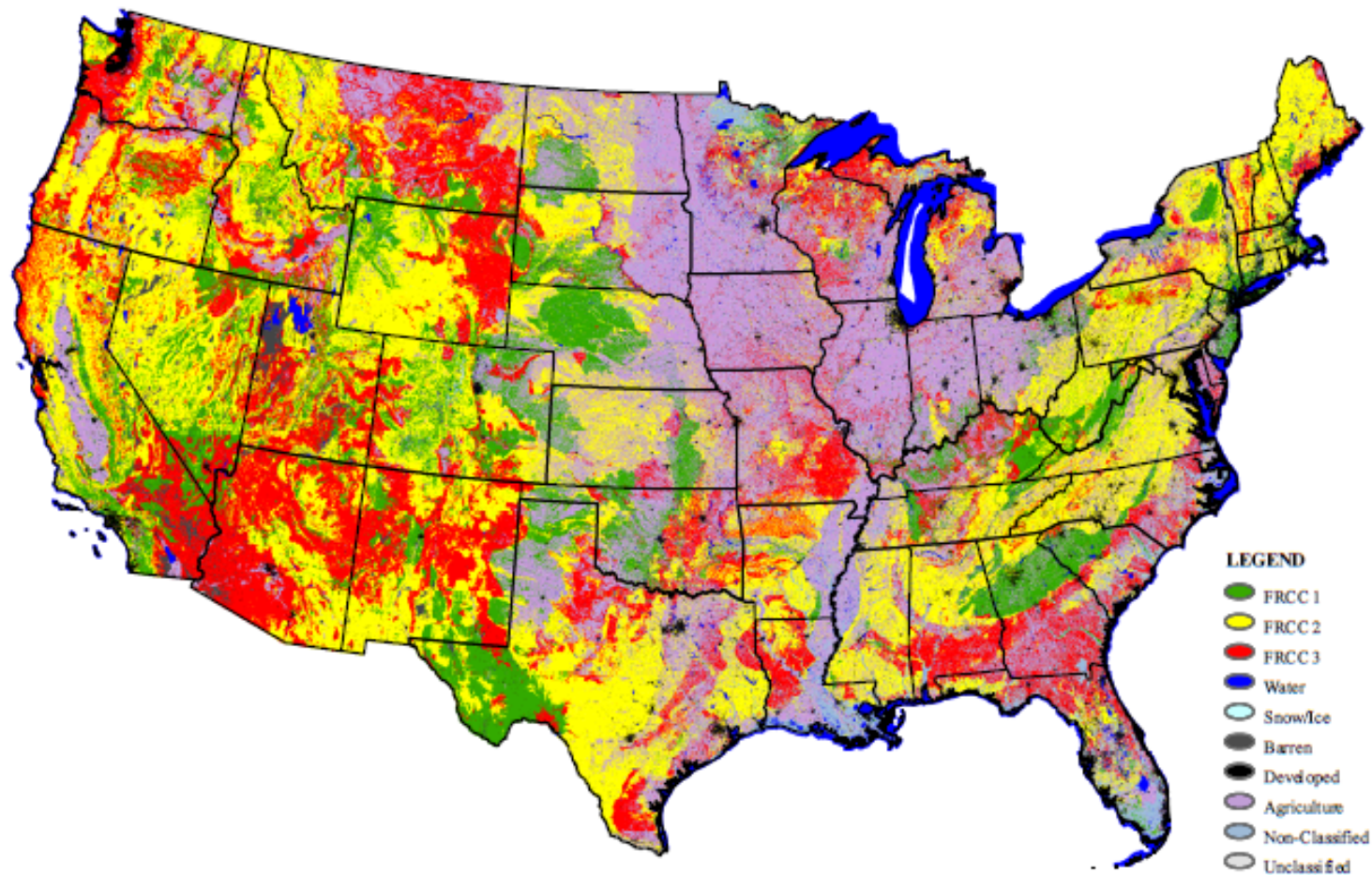


Overview

1. Frequent fire regimes dominate approximately 65% of the lower 48 states, although regional variations exist.
2. Approximately 80% of the lower 48 states is moderately to highly departed from reference conditions, leaving only 20% within the range of variability described by the reference condition.

Overview

Condition Class (Landfire Rapid Assessment 2006)



Multiple efforts

Congressional acts (NFP – 2000; HFI – 2002; HFRA – 2003;)

Western Governor's Assoc. 10-yr Comprehensive Strategy and Implementation Plan (2006)

State government

State agency initiatives

Common Operating Principles

Collaborative Stewardship

Hazardous Fuel Reduction

Restoration

Landscape scale

Firefighting Readiness

Prevention Through Education

USFS National Fire Plan Operating Principles

Collaboration

**Achieve desired future conditions in
collaboration with:**

Communities

Interest groups

State and federal agencies

Hazardous Fuel Reduction

Restoration

Landscape Scale

Firefighting Readiness

Prevention Through Education

USFS National Fire Plan Operating Principles

Collaboration

Hazardous Fuel Reduction

Restoration

Restore health, diversity, and resilience.

Minimize uncharacteristically intense fires.

Priority watershed basis

Landscape Scale

Firefighting Readiness

Prevention Through Education

Community involvement



**Comes down to acre by acre,
with local stakeholder
involvement**

Community Roles

Protection of life/ property from fire

Protection of natural resources and valued attributes from fire

Restoring resilient, sustainable systems at landscape scales

Coordinating the restoration of fire adapted systems at landscape scales with appropriate local resource use

Session Agenda

Will Harling – Burning for a Fire Safe Community and Forest in the Klamath Mountains.

Susanne Hickey – Restoring and maintaining viable ecological communities while providing protection from unwanted wildland fire in the Great Plains.

Amy Waltz – Community Roles in the Deschutes Forest Landscape.

Discussion, questions and examples from the audience

Community Roles in Deschutes Watershed

Protection of life/ property from fire

Project Wildfire

Protection of natural resources and valued attributes (old-growth) from fire

Glaze Meadow Restoration Project

Restoring resilient, sustainable systems at landscape scales

Fire Learning Network

Coordinating the restoration of fire adapted systems at landscape scales with appropriate local resource use

Central Oregon Partnership for Wildfire Risk Reduction

Project Wildfire



The screenshot shows the Project Wildfire website with a background image of a wildfire. The top navigation bar includes links for FIREFREE, CURRENT MEMBERSHIP, PARTNERS, COMMUNITY WILDFIRE PROTECTION PLANS, and CONTACT. The main content area features a 'PROJECT WILDFIRE' section with three images of wildfires and a 'CURRENT HIGHLIGHTS' box listing recent events.

PROJECT WILDFIRE
PARTNERSHIPS IN MITIGATION

[FIREFREE](#) [CURRENT MEMBERSHIP](#) [PARTNERS](#) [COMMUNITY WILDFIRE PROTECTION PLANS](#) [CONTACT](#)

PROJECT WILDFIRE

Project Wildfire is the organized result of a Deschutes County effort to create long-term wildfire mitigation strategies and provide for a disaster-resistant community. Created by [Deschutes County ordinance 8.24.010](#), Project Wildfire is the Local Coordinating Group for Deschutes County that facilitates, educates, disseminates and maximizes community efforts towards effective fire planning and mitigation.

Our mission is to prevent deaths, injuries, property loss and environmental damage resulting from wildfires. By building partnerships, sharing resources and eliminating redundancies, we often succeed where individuals and solo agencies cannot. Our successes include a variety of community projects: an emergency egress route from a heavily populated subdivision, a Hazard Analysis & Vulnerability Study, the Emergency Preparedness Network notification system, an automated weather station, and the very successful FireFree program.

CURRENT HIGHLIGHTS

- [East & West Deschutes County CWPP \(12/18/2007\)](#)
- [Beyond the Flames Education Insert \(2008\)](#)
- [Beyond the Flames Education Insert \(2007\)](#)
- [The 2008 FireFree Recycle Days](#)

For more information, please contact Katie at 541-382-1675

FOR QUESTIONS:
(541) 382-1675

Our mission is to prevent deaths, injuries, property loss and environmental damage resulting from wildfires in Deschutes County.

Glaze Meadow

A conservation community drive to design and implement a project on public lands.

Priorities are protection of old-growth ponderosa stands through restoration thinning and reintroduction of fire.

OregonWild, Sisters Ranger District, + multiple partners.

(FIELD TRIP – Saturday)



Multiple stakeholders

- Federal and state agencies
- Conservation groups
- Local government
- Additional partnerships



Fire Learning Network Goals

Implement ecosystem restoration strategies and fuels reduction at ecologically meaningful scales:
and

Foster innovation and transfer lessons learned to other projects, scientists and decision makers.

NW FLN Participating Landscapes

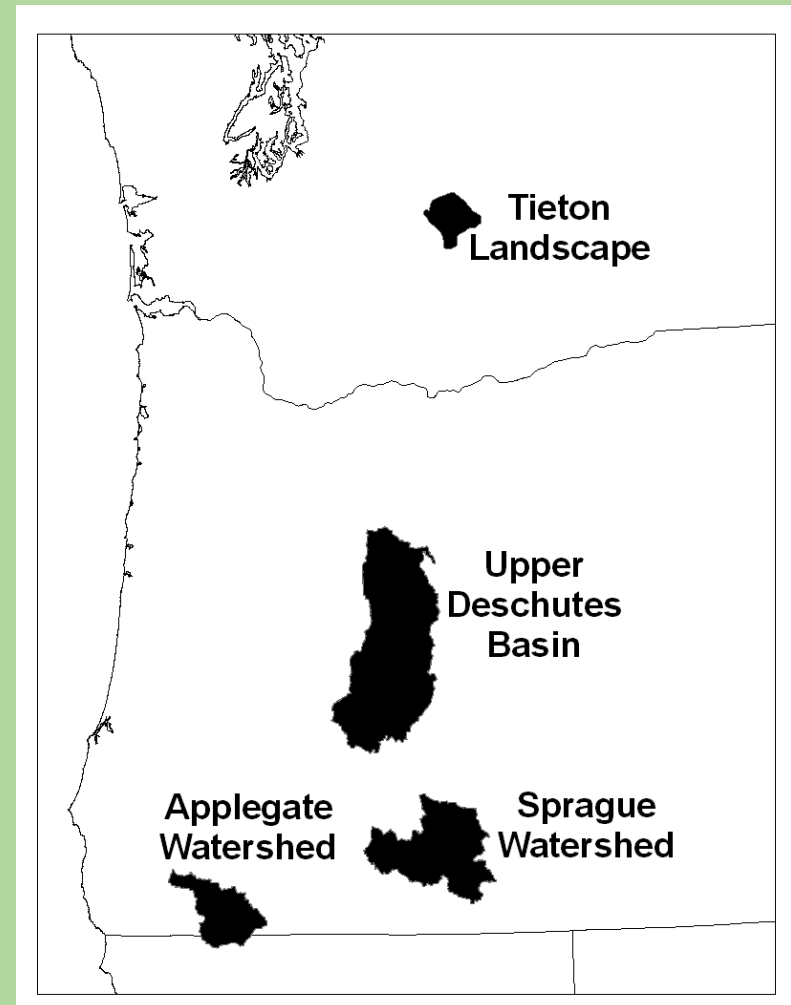
Primary Ownership

Tapash Sustainable Forest Collaborative
(Tieton) Wenatchee-Okanogan NF

Upper Deschutes Basin Deschutes NF

Sprague Watershed Fremont-Winema NF

Applegate Watershed Rogue-Siskiyou N.F. &
Medford District BLM



Initial FLN Accomplishments

Memorandum of Understanding – Tapash SFC.

Vegetation and Fire Regime Condition Class mapping wall-to-wall for the Upper Deschutes Watershed; analysis of restoration prioritization.

Draft charter to address technical gaps for Sprague Watershed and Lakeview Sustained Yield Unit.

Ecological and Social Conservation Action Planning on-going in Applegate.

Central Oregon Partnership for Wildfire Risk Reduction (COPWRR)

COPWRR

Central Oregon Partnership
for Wildfire Risk Reduction



[Home](#)

[About](#)

[Programs](#)

[CROP](#)

[Stakeholders](#)

[Publications](#)

[Links](#)

[Contact](#)

[News](#)

Central Oregon Partnership for Wildfire Risk Reduction



The Central Oregon Partnerships for Wildfire Risk Reduction (COPWRR) is a collaborative effort among public agencies, forest products businesses, community groups and environmental and sustainability organizations to reduce wildfire risk, restore forest ecosystems, and provide local jobs and income within Central Oregon's forest communities.

COPWRR seeks to achieve these goals through stakeholder dialogue...[more](#)

Highlighted Project



U.S. Forest Service "Katalo Project" becomes the first to go through COPWRR monitoring process...[more](#)

COPWRR is a collaborative effort to reduce wildfire risk, restore forest ecosystems, and provide local jobs and income within Central Oregon's forest communities.

Community Roles in Deschutes Watershed

Protection of life/ property from fire

Project Wildfire

Protection of natural resources and valued attributes (old-growth) from fire

Glaze Meadow Restoration Project

Restoring resilient, sustainable systems at landscape scales

Fire Learning Network

Coordinating the restoration of fire adapted systems at landscape scales with appropriate local resource use

Central Oregon Partnership for Wildfire Risk Reduction

Discussion Questions

List the barriers commonly seen in community-based restoration of fire.

List strategies to address these barriers.

What has been shown to work in other settings?
What has been shown to not work?